






Isotop® SD

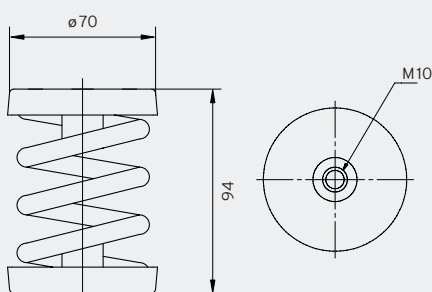
Steel spring isolators

- Natural frequency from 3.2Hz
- Electro-galvanised or cathodic dip-coated (CDC) for increased corrosion protection
- Secure connection between the plate and the spring thanks to special adhesive
- M10 internal thread
- Suitable base plate and/or height adjustment available
- Base plate with damping element (FP/K) also isolates higher frequencies
- Simple load control thanks to open design
- Spring design conforms to DIN EN 13906-1

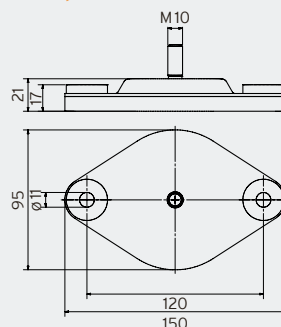
		Maximum load		Natural frequency at maximum load	Packaging unit	Order number
		in kg	in N			
SD spring element galvanised 	Isotop® SD 1	20	196	3.4 Hz	50 pcs.	39443
	Isotop® SD 2	33	324	3.4 Hz	50 pcs.	39444
	Isotop® SD 3	52	510	3.4 Hz	50 pcs.	39003
	Isotop® SD 4	82	804	3.4 Hz	50 pcs.	39455
	Isotop® SD 5	123	1,206	3.4 Hz	50 pcs.	39004
	Isotop® SD 6	195	1,913	3.4 Hz	50 pcs.	39456
	Isotop® SD 7	310	3,041	3.4 Hz	50 pcs.	39457
	Isotop® SD 8	420	4,120	3.4 Hz	50 pcs.	39458
	Isotop® SD 9	525	5,150	3.4 Hz	50 pcs.	39459
SD spring element CDC 	Isotop® SD 1 CDC	20	196	3.4 Hz	100 pcs.	39460
	Isotop® SD 2 CDC	33	324	3.4 Hz	100 pcs.	39461
	Isotop® SD 3 CDC	52	510	3.4 Hz	50 pcs.	39462
	Isotop® SD 4 CDC	82	804	3.4 Hz	50 pcs.	39463
	Isotop® SD 5 CDC	123	1,206	3.4 Hz	50 pcs.	39464
	Isotop® SD 6 CDC	195	1,913	3.4 Hz	50 pcs.	39465
	Isotop® SD 7 CDC	310	3,041	3.4 Hz	50 pcs.	39466
	Isotop® SD 8 CDC	420	4,120	3.4 Hz	100 pcs.	39467
	Isotop® SD 9 CDC	525	5,150	3.4 Hz	100 pcs.	39468
Base plate FP/K with damping element for SD/DSD 	Isotop® FP/K 1-9		for SD 1 to 9	including screws ¹	50 pcs.	38216
	Isotop® FP/K 1-9 CDC		for SD 1 to 9	including screws ¹	50 pcs.	39158
Base plate FP for SD/DSD 	Isotop® FP 1-9		for SD 1 to 9	without screws	50 pcs.	39536
	Isotop® FP 1-9 CDC		for SD 1 to 9	without screws	50 pcs.	39537
Height adjustment for SD/DSD 	Isotop® NV 1-9	M10	for SD 1 to 9		1 set (= 4 pcs.)	39535

¹ M10 connecting screws between base plate and spring

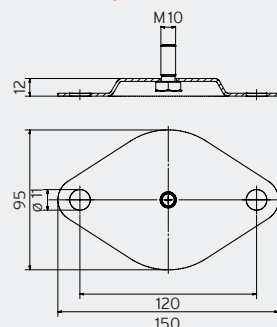
Isotop® SD (unladen)



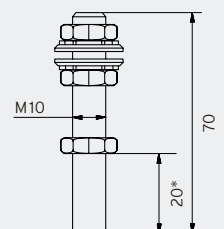
Isotop® FP/K



Isotop® FP



Isotop® NV 1-9



*Thread reach SD/DSD

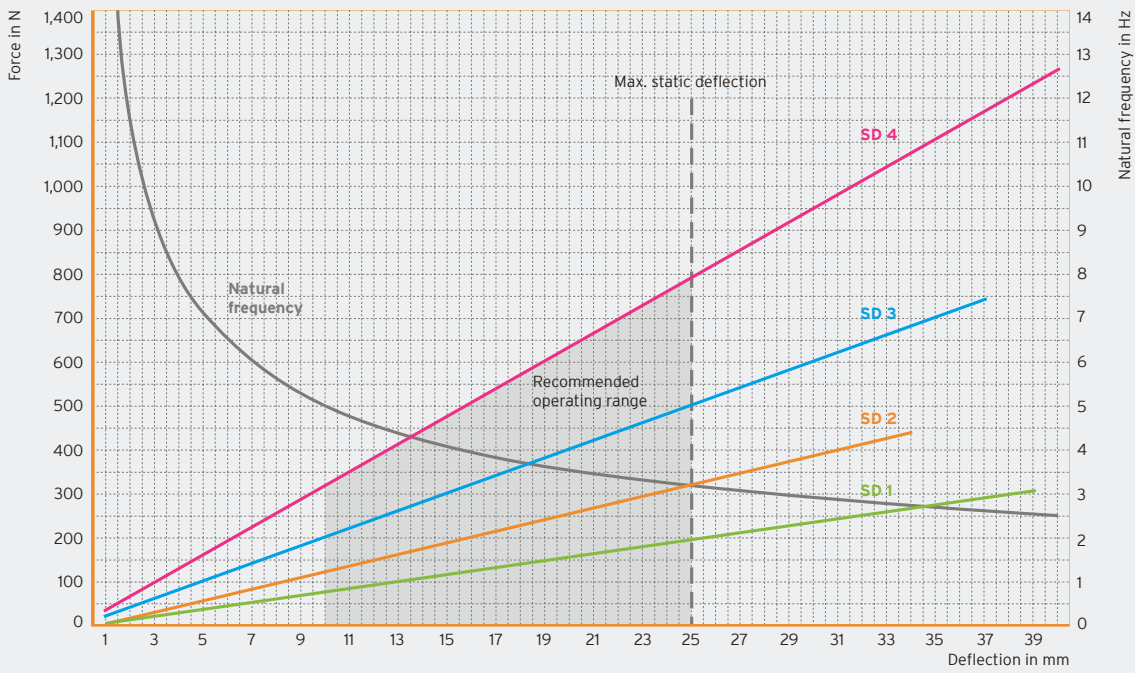


Bearing of belt-driven fans

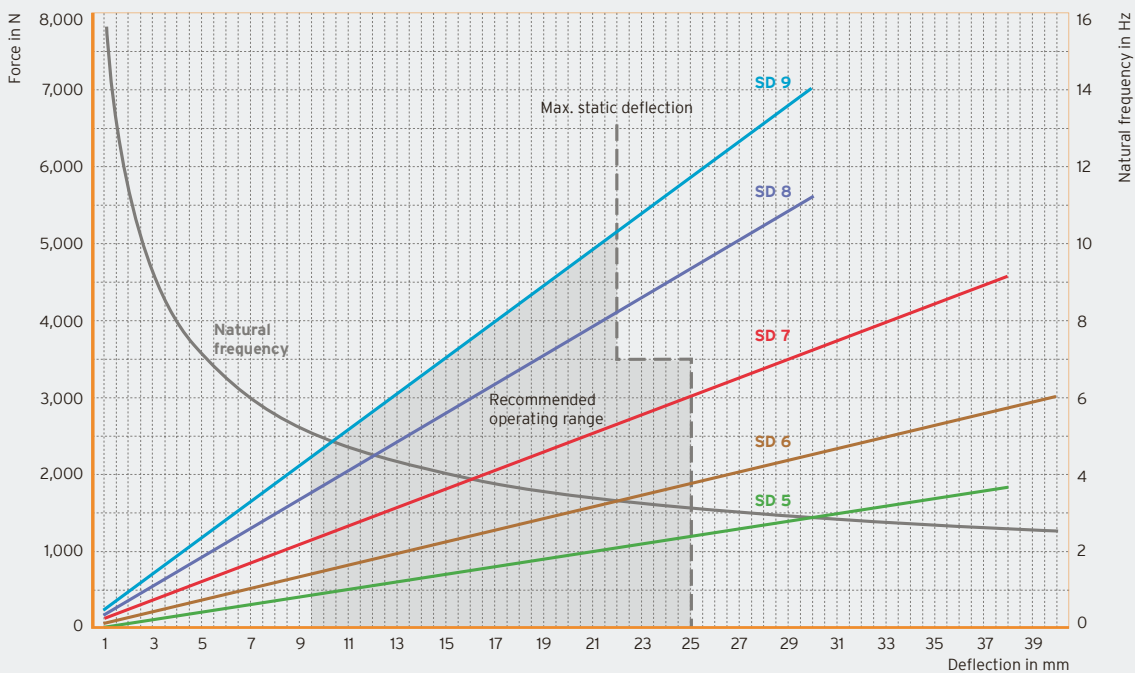


Industrial heat pump

Isotop® SD 1– SD 4



Isotop® SD 5– SD 9



DB Isotop® en © Copyright by Getzner Werkstoffe GmbH 05/2020 | All information and data is based on our current knowledge. The data can be applied for calculations and as guidelines, are subject to typical manufacturing tolerances and are not guaranteed. Material properties as well as their tolerances can vary depending on type of application or use and are available from Getzner on request. Further information can be found in VDI Guideline 2062 (Association of German Engineers) as well as in glossary. Further characteristic values on request.