
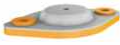






# Isotop® DSD

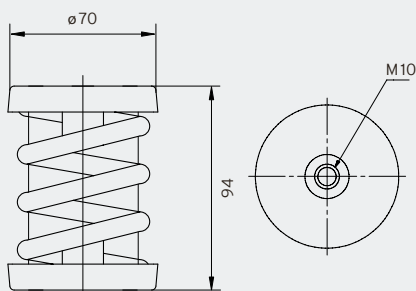
## Steel spring isolators with integrated high-performance dampers

- Natural frequency from 4.2Hz
- Sylodamp® inside - ideal for machines with several start-stop cycles
- Cathodic dip-coating (CDC) for increased corrosion protection
- Secure connection between the plate and the spring thanks to special adhesive
- M10 internal thread
- Suitable base plate and/or height adjustment available
- Base plate with damping element (FP/K) also isolates higher frequencies
- Simple load control thanks to open design
- Spring design conforms to DIN EN 13906-1

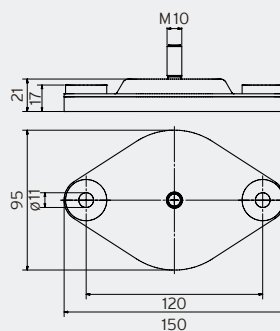
		Maximum load		Natural frequency at maximum load	Packaging unit	Order number
		in kg	in N			
<b>DSD spring element CDC</b> 	Isotop® DSD 1 CDC	24	235	5.6Hz	50 pcs.	<b>39492</b>
	Isotop® DSD 2 CDC	39	383	4.9Hz	50 pcs.	<b>39493</b>
	Isotop® DSD 3 CDC	57	559	4.8Hz	50 pcs.	<b>39495</b>
	Isotop® DSD 4 CDC	87	853	4.2Hz	50 pcs.	<b>39496</b>
	Isotop® DSD 5 CDC	140	1,373	4.8Hz	50 pcs.	<b>39497</b>
	Isotop® DSD 6 CDC	200	1,962	4.3Hz	50 pcs.	<b>39157</b>
	Isotop® DSD 7 CDC	365	3,581	5.2Hz	50 pcs.	<b>39498</b>
	Isotop® DSD 8 CDC	470	4,611	4.7Hz	50 pcs.	<b>39499</b>
	Isotop® DSD 9 CDC	650	6,377	4.6Hz	50 pcs.	<b>39500</b>
<b>Base plate FP/K with damping element for SD/DSD</b> 	Isotop® FP/K 1-9 CDC		for DSD 1 to 9	including screws <sup>1</sup>	50 pcs.	<b>39158</b>
<b>Base plate FP for SD/DSD</b> 	Isotop® FP 1-9 CDC		for DSD 1 to 9	without screws	50 pcs.	<b>39537</b>
<b>Height adjustment for SD/DSD</b> 	Isotop® NV 1-9	M10	for DSD 1 to 9		1 set (= 4 pcs.)	<b>39535</b>

<sup>1</sup> M10 connecting screws between base plate and spring

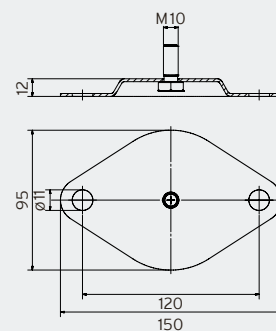
**Isotop® DSD (unladen)**



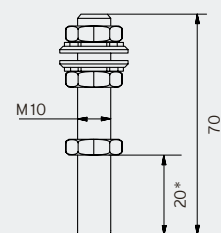
**Isotop® FP/K**



**Isotop® FP**



**Isotop® NV 1-9**



\*Thread reach SD/DSD

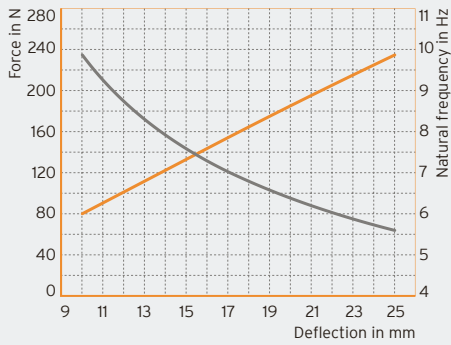


Small combined heat and power plant

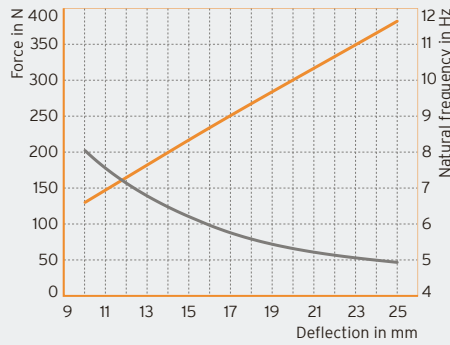


Roof-mounted recoler

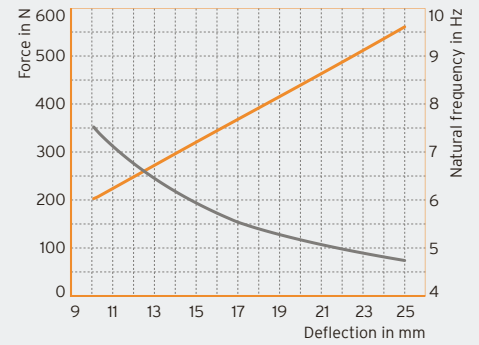
**Isotop® DSD 1**



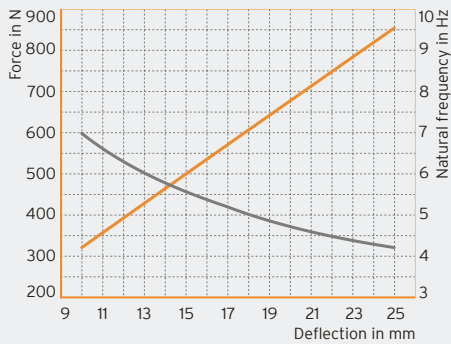
**Isotop® DSD 2**



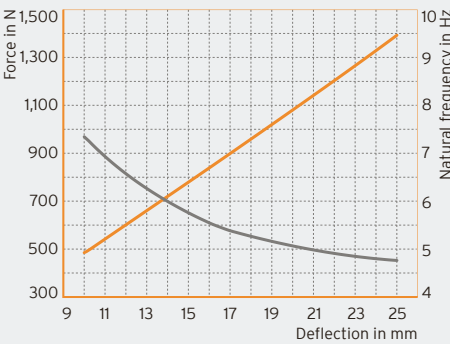
**Isotop® DSD 3**



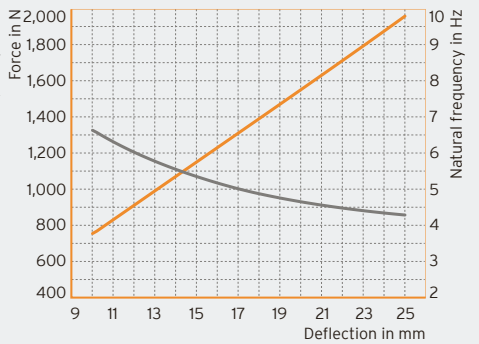
**Isotop® DSD 4**



**Isotop® DSD 5**



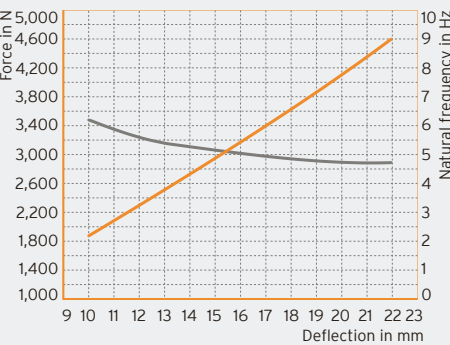
**Isotop® DSD 6**



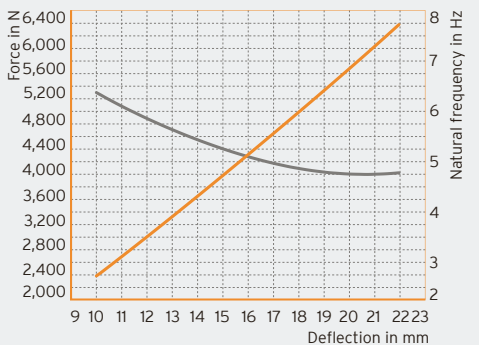
**Isotop® DSD 7**



**Isotop® DSD 8**



**Isotop® DSD 9**



— Force in N  
— Natural frequency in Hz

DB Isotop® en © Copyright by Getzner Werkstoffe GmbH | 05-2020 | All information and data is based on our current knowledge. The data can be applied for calculations and as guidelines, are subject to typical manufacturing tolerances and are not guaranteed. Material properties as well as their tolerances can vary depending on type of application or use and are available from Getzner on request. Further information can be found in VDI Guideline 2062 (Association of German Engineers) as well as in glossary. Further characteristic values on request.