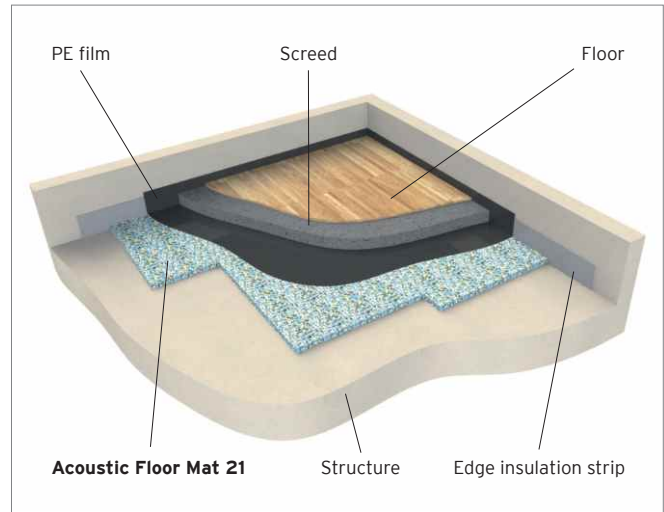


# Acoustic Floor Mat 21 Product Data Sheet

**Application area** Impact noise insulation underneath screed flooring  
 – Hotels  
 – Fitness studios  
 – Hospitals and old people's homes  
 – Dry floors and renovations

**Material** 100% polyurethane  
**Color** Multicolored

**IIC Rating** **56** according to ASTM E 989  
**STC Rating** **62** according to ASTM E 413

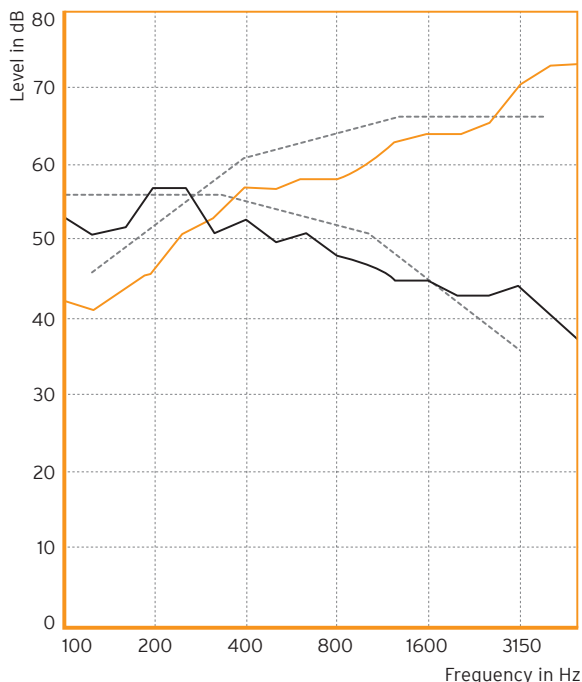


### Advantages and benefits

- Effective over the entire load range
- Low installed height – particularly suitable for refurbishments
- Quick installation – does not need to be bonded to the foundation
- Easy handling
- Outstanding performance over lifetime of the building

Product properties		Test methods	Comment
Load range	2,500 kg/m <sup>2</sup> (512 lb/sqf)		
Thickness	8 mm (5/16 in)		
Dyn. rigidity s <sup>1</sup>	≤ 40 MN/m <sup>3</sup>	EN 29052-1	
Compressibility c (d <sub>L</sub> - d <sub>B</sub> )	≤ 1 mm (3/8 in)	EN 12431	
Flammability	Class E	EN ISO 11925-2	normal flammable, EN 13501-1
Thermal conductivity	0.06 W/mK	according to EN 12667	
Temperature range	-22°F to 158°F		higher temperatures possible for short periods
Impact Insulation Class IIC	56	ASTM E 492	ASTM E 989
Sound Transmission Class STC	62	ASTM E 90	ASTM E 413

**Impact and airborne noise level according to ASTM E 90 and ASTM E 492**



f in Hz	impact SPL in dB	airborne TL in dB
80	63.0	44.0
100	53.0	42.0
125	51.0	41.0
160	52.0	44.0
200	57.0	46.0
250	57.0	51.0
315	51.0	53.0
400	53.0	57.0
500	50.0	57.0
630	51.0	58.0
800	48.0	58.0
1,000	47.0	60.0
1,250	45.0	63.0
1,600	45.0	64.0
2,000	43.0	64.0
2,500	43.0	65.0
3,150	44.0	70.0
4,000	40.0	73.0
5,000	37.0	73.0
6,300	32.0	73.0
8,000	24.0	82.0
10,000	14.0	85.0

— airborne transmission loss  
— normalized impact sound pressure level

**Test assembly:**  
100 mm / 4" cement screed  
(240 kg/m<sup>2</sup> / 49 lb/sqf)  
8 mm 1/4" AFM 21  
(s' 40 MN/m<sup>3</sup>)  
152 mm/6" reinforced concrete floor  
(360 kg/m<sup>2</sup> / 74 lb/sqf)

**Standard delivery dimensions, ex warehouse**

Thickness: 8 mm (1/4")  
Panels: 1500 x 1200 mm (4' 11" x 3' 11 1/4")  
Pallet: 115 items (207 m<sup>2</sup> / 2228 1/8 sqf)

**Installation instructions and tender specifications**

Additional information can be found on our website at [www.getzner.com](http://www.getzner.com)



All information and data is based on our current level of knowledge. It can be used in calculations and for reference purposes. It is subject to typical manufacturing tolerances and does not represent warranted properties. Subject to change without notice.

