

ISOTOP® BLOCK ELEMENT AND ISOTOP® DT

INSTALLATION GUIDELINE



1. Instruction

Carefully read through the installation guideline before starting installation work. To ensure the bearing functions correctly, it is essential that you observe and implement the following points. The installation surfaces must be level and within acceptable construction tolerances.

Note: For general requirements, please refer to the Isotop® installation manual. Please read it carefully in advance.

2. Storage

- Always transport in original packaging.
- Damage to the packaging must be repaired immediately (with plastic film and adhesive tape).
- Only store in a dry place in the original packaging.
- Protect from direct sunlight.
- Protect from moisture after removing the original packaging.
- During storage, please note that pallets must not be stacked.
- The conditions (and temperature) at the storage location must correspond to those at the installation site.

If the temperature at the storage location differs significantly from that at the installation site, it is advisable to prepare/condition the Isotop® elements over a period of at least 24 hours.

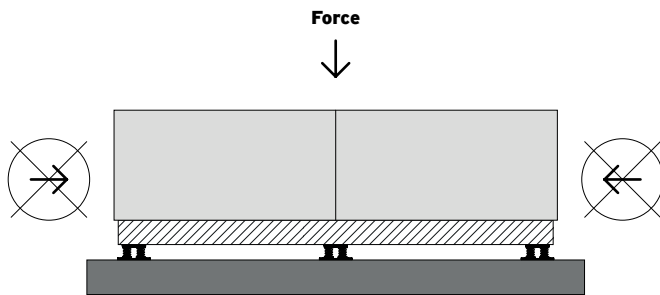
- If stored properly, they can be stored for years and be used at any time.

3. Installation

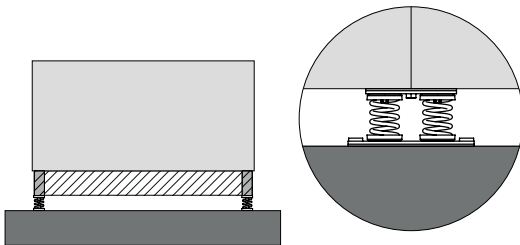
3.1 Cleaning

The base frame or foundation must be swept clean, free of oil, grease and other soiling and must not have any sharp edges. Loose objects, such as stones, must be removed using suitable equipment.

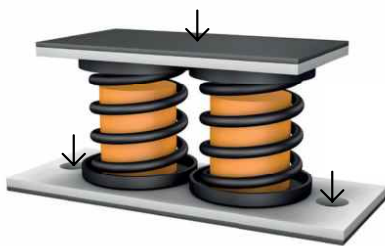
3.2 Installation note



In order to avoid lateral forces, roof units have to be provided with a windbreak.



- The elements have to be placed in the middle of joints.
- The elements have to be placed directly in the middle of the force introductory points of the base frame.
- The elements must rest with its full surface on the steel support or floor.



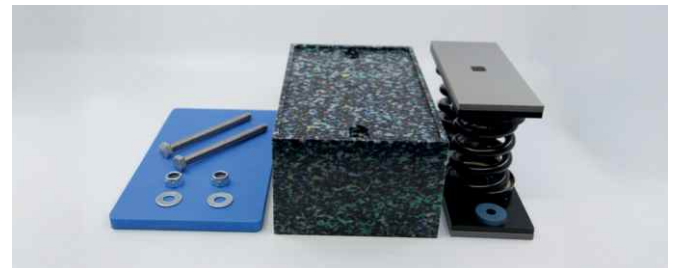
- External materials between vibration damper and machine or foundation must be avoided.
- We recommend screwing the elements to the base frame or equipment and substructure.
- Washers must be used when bolting to the base frame or foundation.

Note: Avoid excessive preload due to over-tightening!

4. Optional: Montage Isotop® DT

Note: Use the Isotop® DT spacer base exclusively with Isotop® SD-BL2-xx/xx, Isotop® SD-BL4-xx/xx, Isotop® DSD-BL2-xx/xx and Isotop® DSD-BL4-xx/xx.

4.1 Isotop® DT



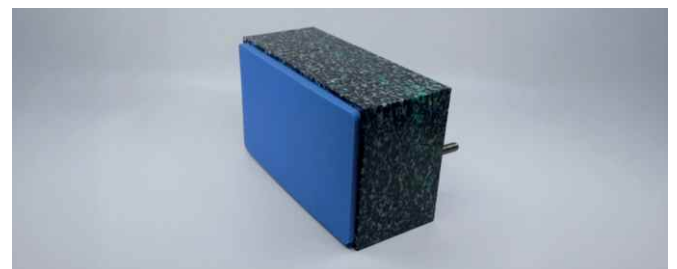
Isotop® spring element is not included in the scope of supply.

4.2 Fitting the bolts



Push the bolts through the Isotop® DT from below.

4.3 Attaching the anti-slip layer



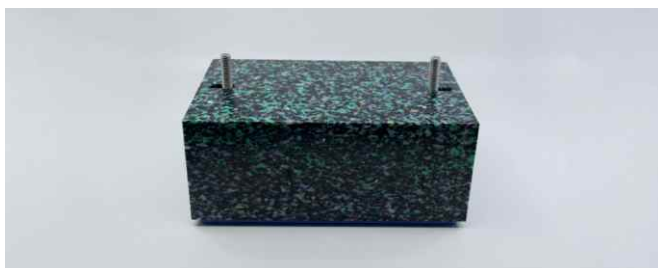
Pull off the protective film from the self-adhesive strip and stick the anti-slip layer to the underside.

4.4 Isotop® BL2-xx/xx



Place bolts as close as possible to the outer edge (distance = 225 mm).

4.5 Isotop® BL4-xx/xx



Place bolts as close as possible to the inside (distance = 195 mm).

4.6 Assembling the Isotop® spring element



Place the block element (shown on the Isotop® SD-BL2) on to the Isotop® DT.

4.7 Fixing



Fit and tighten the washers and nuts.

Note: Avoid excessive preload due to over-tightening!

5. Lifetime and recycling

Isotop® elements are products made of durable elastomers and refined steel parts. At the end of the service life of the stored machine, the elastomers can be mechanically detached from the metal parts and disposed of accordingly.

None of our materials pose any environmental hazards.

6. Disclaimer

This installation guideline is only intended to support and advise customers and their contractors during the installation of Getzner Isotop® Products. Getzner Werkstoffe outlines therein known requirements and challenges. These installation guidelines have been prepared with the utmost care.

However, due to the wide range of different construction methods and requirements, Getzner Werkstoffe cannot assume any liability for the completeness of the installation guideline. In particular, Getzner Werkstoffe is not responsible for the correct installation of Getzner's Isotop® products. In the event of an incorrect installation, Getzner Werkstoffe is not liable for any negative effects on the properties / quality of Getzner's Isotop® products or their performance.

It is strongly recommended that the installation be carried out by a professional / expert. All other rights are reserved. Disclosure to third parties is expressly prohibited.