

# Installation guideline

## Elastic decoupling in timber construction

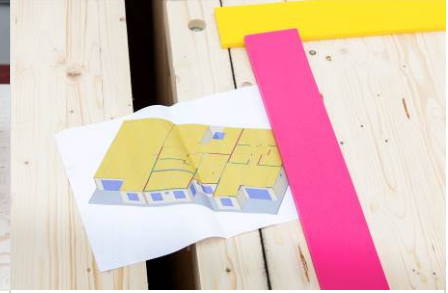
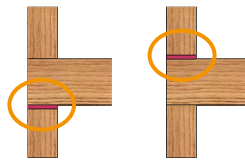
**getzner**  
engineering a quiet future



- 1) Please read the guideline carefully before you start the installation.



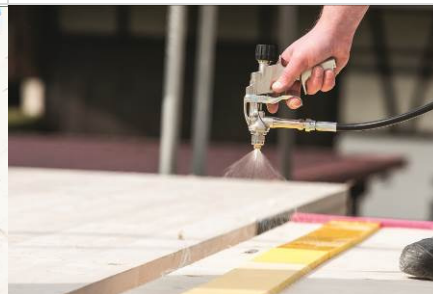
- 2) Please check if the delivered materials match to your installation plan.  
Make sure you know the exact location of the elastomers.



- 3) Prepare supporting sub ground according to construction specifications (e.g. sill beam) and mark the position of the elastomers.



- 4) Now cut the elastomers to the desired dimensions according to your positioning or installation plan.



- 5) Optionally the elastomers can be secured with spray adhesive or mechanically, to prevent slippage during the placement process of the timber elements.

Caution: Mechanical fixings must be minimum 3 mm underneath the material surface.



- 6) Place the elastomers to their final position according to your installation plan. Put the butts bluntly together.

Caution: The airtightness is only given when the installation is done in a clean and proper way.

**getzner**  
engineering a quiet future

# Installation guideline

## Elastic decoupling in timber construction

**getzner**  
engineering a quiet future



**7)** Setting of the timber elements.

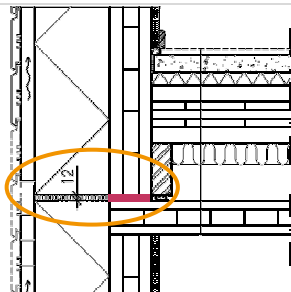
Caution: Pay additional attention to possible movement of the elastomers if those are not fixed (see Point 5).



**8)** Mechanical connections between decoupled elements need to be equipped with elastomers too. (z.B. ABAI105)



**9)** Screw connections need to be pre-drilled. In order to decouple the screw elastic washers are recommended.



**10)** It is important that the decoupled elements and components (e.g. façade, wall plate) are separated continuously throughout the whole structure.

Caution: Continuous elements can produce secondary sound channels.



**11)** Repeat procedure at all other remaining levels.

All information and data is based on our current knowledge. It can be used as proposal for the installation of Getzner elastomers in timber construction. We reserve the right to amend the data.

Installation guidelines in other languages are available on our homepage.