





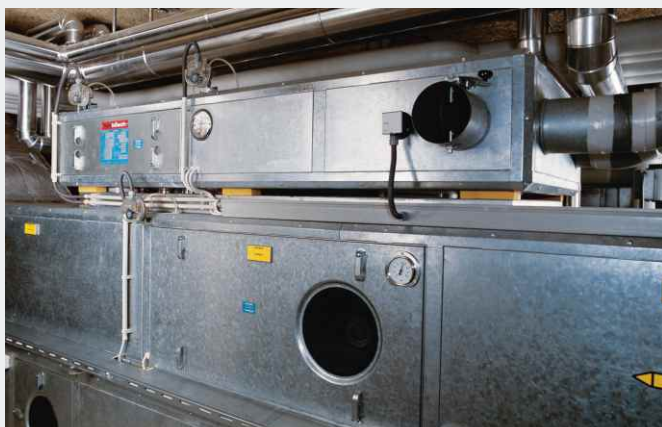
# Sylomer<sup>®</sup> Point Bearing PBE

## Point bearing for general use

- Universally applicable
- Available in practical formats of 50×50 or 100×100 and in heights of 12.5 mm and 25 mm
- Natural frequencies from 10.5 Hz
- Load capacity of up to 1,075 kg per point bearing

	Type	Maximum load		Natural frequency at maximum load	Packaging unit	Order number
		in kg	in N			
<b>PBE-S</b> <b>50×50×12.5 mm</b> 	PBE-S-5	6	58	18.5 Hz	1 set (= 48 pcs.)	<b>41930</b>
	PBE-S-13	13	128	17.0 Hz	1 set (= 48 pcs.)	<b>41931</b>
	PBE-S-25	25	245	17.0 Hz	1 set (= 48 pcs.)	<b>41932</b>
	PBE-S-45	48	470	15.5 Hz	1 set (= 48 pcs.)	<b>41933</b>
	PBE-S-95	95	932	15.5 Hz	1 set (= 48 pcs.)	<b>41934</b>
<b>PBE-M</b> <b>50×50×25 mm</b> 	PBE-M-5	6	58	12.5 Hz	1 set (= 48 pcs.)	<b>41935</b>
	PBE-M-13	12	117	11.5 Hz	1 set (= 48 pcs.)	<b>41936</b>
	PBE-M-25	23	225	11.5 Hz	1 set (= 48 pcs.)	<b>41937</b>
	PBE-M-40	42	412	10.7 Hz	1 set (= 48 pcs.)	<b>41938</b>
	PBE-M-80	80	784	11.0 Hz	1 set (= 48 pcs.)	<b>41939</b>
<b>PBE-L</b> <b>100×100×12.5 mm</b> 	PBE-L-25	28	274	18.5 Hz	1 set (= 48 pcs.)	<b>41940</b>
	PBE-L-55	55	540	17.0 Hz	1 set (= 48 pcs.)	<b>41941</b>
	PBE-L-110	110	1,079	17.0 Hz	1 set (= 48 pcs.)	<b>41942</b>
	PBE-L-215	215	2,109	15.5 Hz	1 set (= 48 pcs.)	<b>41943</b>
	PBE-L-435	435	4,267	15.5 Hz	1 set (= 48 pcs.)	<b>41944</b>
	PBE-L-780	780	7,652	16.0 Hz	1 set (= 48 pcs.)	<b>41945</b>
	PBE-L-1140	1,075	10,545	15.5 Hz	1 set (= 48 pcs.)	<b>41946</b>
<b>PBE-XL</b> <b>100×100×25 mm</b> 	PBE-XL-25	27	264	12.5 Hz	1 set (= 48 pcs.)	<b>41947</b>
	PBE-XL-50	52	510	11.5 Hz	1 set (= 48 pcs.)	<b>41948</b>
	PBE-XL-105	101	990	11.5 Hz	1 set (= 48 pcs.)	<b>41949</b>
	PBE-XL-195	195	1,913	10.5 Hz	1 set (= 48 pcs.)	<b>41950</b>
	PBE-XL-385	377	3,698	11.0 Hz	1 set (= 48 pcs.)	<b>41951</b>
	PBE-XL-640	610	5,984	11.0 Hz	1 set (= 48 pcs.)	<b>41952</b>
	PBE-XL-820	820	8,044	10.5 Hz	1 set (= 48 pcs.)	<b>41953</b>

Not held in stock. Delivery time on request (approx. 15 working days from the factory)  
 Minimum purchase quantity = packaging unit or multiple thereof



Decoupled ventilation device module



Decoupling of the internal unit of a heat pump