





Isotop SE-DE and SE-DE Elevator

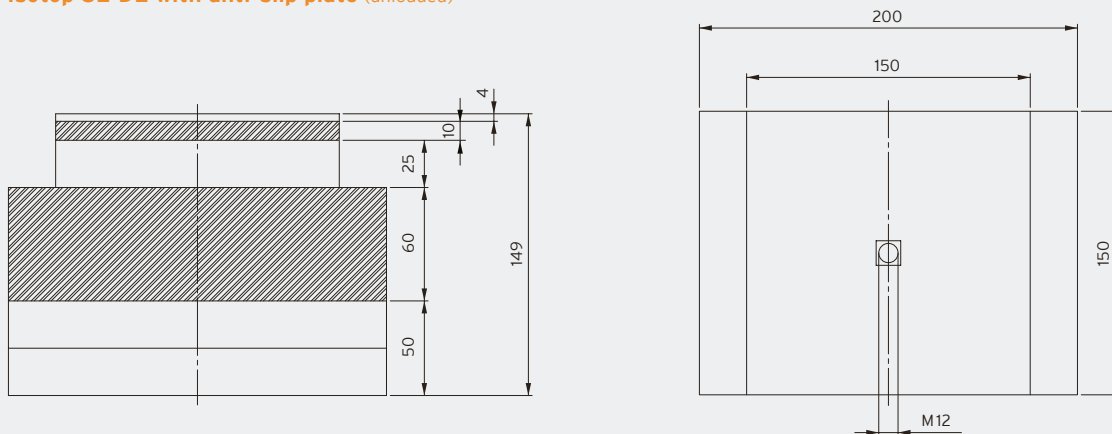
Sandwich element with double-elastic bearing

- Natural frequency from 5.7 Hz
- Sylomer® or Syldyn® inside
- Category EL-3 according to DIN 8989 (VDI 2566)
- Top plate fitted with 4 mm Sylomer® anti-slip plate
- 10 mm hot dip galvanised steel plate for pressure distribution
- 60 mm thick, heavy settling mass
- M12 internal thread for easy screw-fixing
- Quick and easy to install

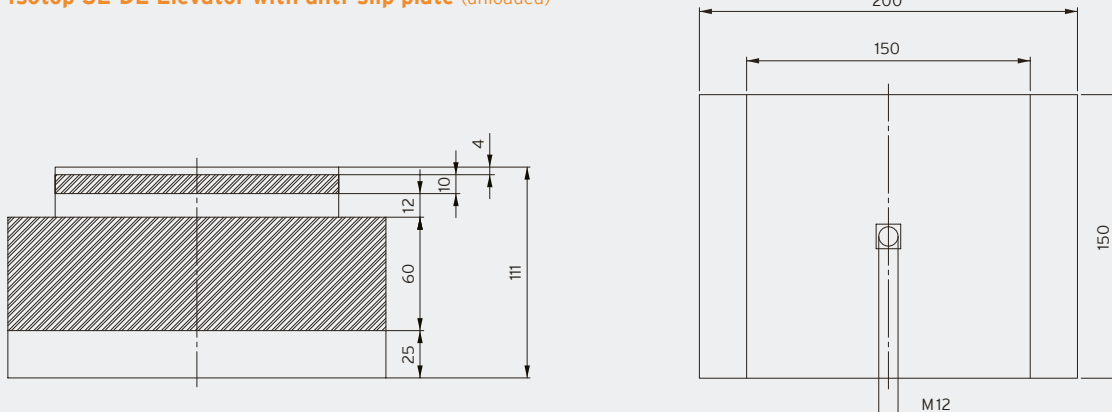
		Maximum load		Natural frequency at maximum load	Packaging unit	Order number
		in kg	in N			
SE-DE 	Isotop SE-DE 10	105	1,030	6.6 Hz	4 pcs.	47270
	Isotop SE-DE 13	142	1,393	7.0 Hz	4 pcs.	47263
	Isotop SE-DE 30	285	2,795	7.0 Hz	4 pcs.	47268
	Isotop SE-DE 50	550	5,395	6.6 Hz	4 pcs.	47266
	Isotop SE-DE 100	1,080	10,594	6.5 Hz	OR	OR
	Isotop SE-DE 170	1,730	16,971	6.5 Hz	OR	OR
	Isotop SE-DE 280	2,840	27,860	5.7 Hz	OR	OR
SE-DE Elevator 	Isotop SE-DE Elevator 13	150	1,471	10.4 Hz	OR	OR
	Isotop SE-DE Elevator 30	310	3,041	10.2 Hz	OR	OR
	Isotop SE-DE Elevator 50	620	6,082	9.5 Hz	20 pcs.	47250
	Isotop SE-DE Elevator 100	1,250	12,262	9.5 Hz	4 pcs.	47247
	Isotop SE-DE Elevator 170	2,190	21,483	9.5 Hz	4 pcs.	47245
	Isotop SE-DE Elevator 280	3,480	34,138	8.8 Hz	4 pcs.	47243

SE-DE and SE-DE Elevator not stock items. Delivery time on request (approx. 15 working days from the factory)
OR ... On request

Isotop SE-DE with anti-slip plate (unloaded)



Isotop SE-DE Elevator with anti-slip plate (unloaded)



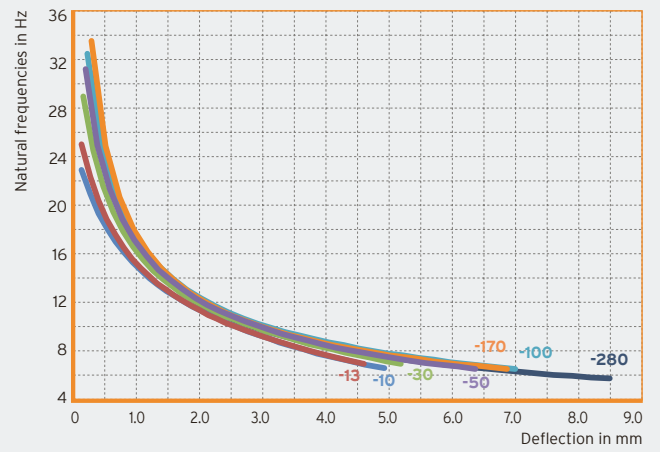
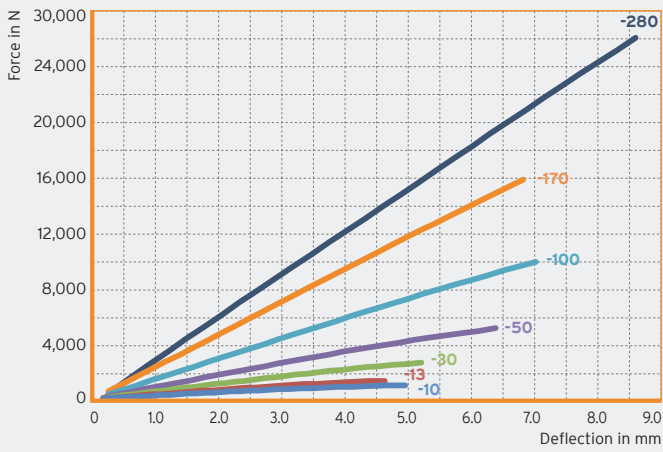


Bearing of a lift system with overhead cable guide

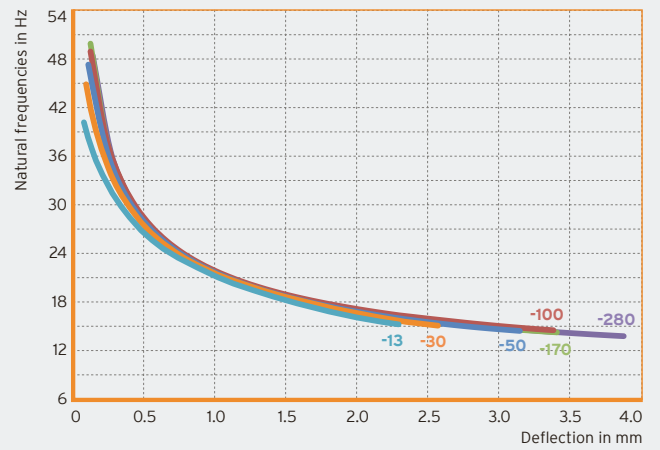
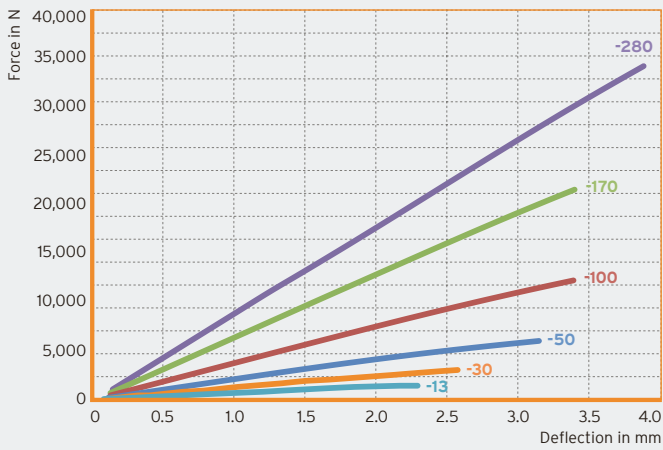


Chiller indoor unit

Isotop SE-DE



Isotop SE-DE Elevator



DB Isotop en © Copyright by Getzner Werkstoffe GmbH | 02-2022 | All information and data is based on our current knowledge. It can be used in calculations and for reference purposes, but is subject to product-specific and application-specific manufacturing tolerances and does not represent warranted properties. Material properties and their tolerances vary depending on the type of application and load and are available from Getzner on request. Subject to change without notice. For further general information, see VDI directive 2062 and glossary. Further characteristic values available on request.