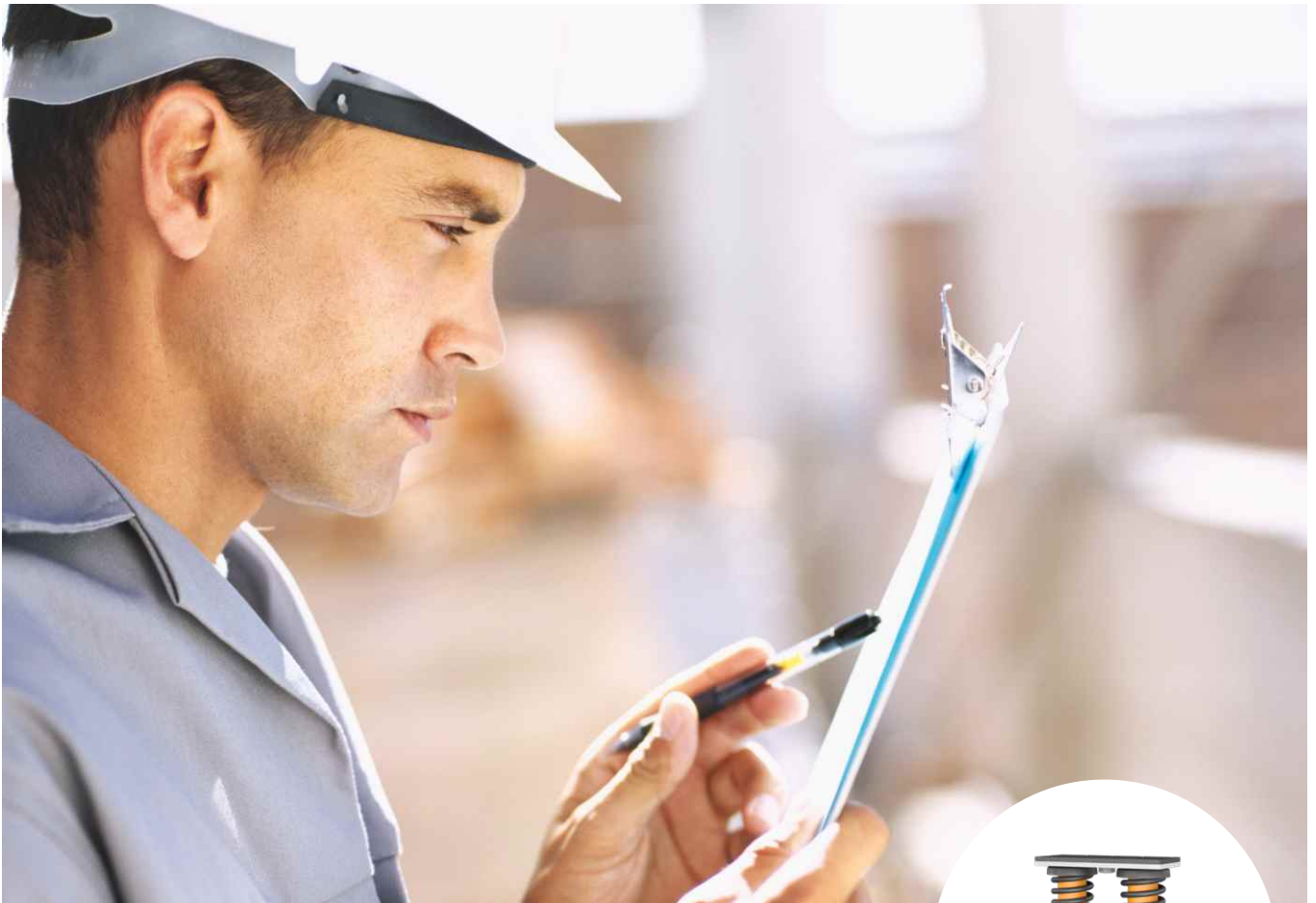


Installation Guideline

Isotop DT



1. Storage

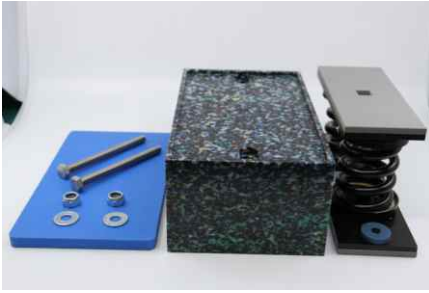
The products must be stored in a clean and dry place.

2. Storage conditions

The storage conditions should reflect the prevailing humidity levels and ambient temperature at the installation site where possible.

3. Cleaning

The foundation must be clean, dry and free from oil, grease and other contaminants.



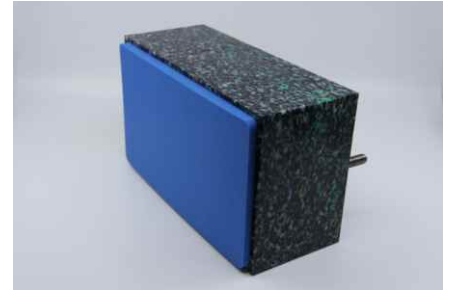
4. Isotop DT

Isotop spring element is not included in the scope of supply.



5. Fitting the bolts

Push the bolts through the Isotop DT from below.



6. Attaching the anti-slip layer

Pull off the protective film from the self-adhesive strip and stick the anti-slip layer to the underside.



7. Isotop xx-BL2

Place bolts as close as possible to the outer edge (distance = 225 mm).



7. Isotop xx-BL4

Place bolts as close as possible to the inside (distance = 195 mm).



8. Assembling the Isotop spring element

Place the block element (shown on the Isotop SD-BL2) onto the Isotop DT.



9. Fixing

Fit washers and tighten bolts.

Note: Avoid excessive preload due to over-tightening!